



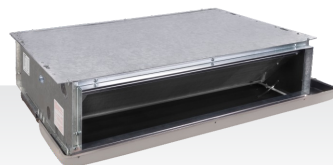
CEILING CONCEALED FAN COIL UNIT

Model: SAF-CCP200-300-400-600-800-1000-1200



Suzuki Corporation Pte. Ltd.
www.suzuki.sg

CEILING CONCEALED FAN COIL UNIT



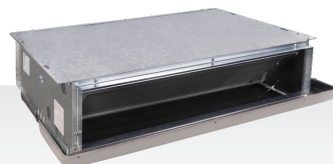
Double Coil Unit Technical Data (4-Pipe)

Model		SAF-CCP200 R2/L2	SAF-CCP300 R2/L2	SAF-CCP400 R2/L2	SAF-CCP600 R2/L2	SAF-CCP800 R2/L2
Nominal Air Flow Rate	CFM	200	300	400	600	800
	CMH	340	510	680	1020	1359
Total Heating Capacity	KW	5.3	7.4	9.1	12.5	15.8
	KBtu/hr	17.9	25.4	31.2	42.9	53.9
Total Cooling Capacity	KW	2.6	3.8	4.7	6.4	8.2
	KBtu/hr	8.9	12.8	15.9	21.7	27.9
Weight	kg	21.0	26.0	31.0	35.0	44.0
	lb	46	57	68	77	97
Nominal Power	W	25			30	55
	HP	0.03			0.04	0.07
Coil Test Pressure	kPa	2746				
	psig	398				
Coil Working Pressure	kPa	1765				
	psig	256				
Rated Current	Amp	0.22	0.19	0.22	0.33	0.48
Noise	dBA	42	33	37.9	37.8	40
Motor	QTY	1				2
Drain Pipe		3/4"				

NOTE

- Cooling capacities are based on 44°F entering chilled water temperature and 80°F DB / 67°F WB air temperature at sea level altitude and fan high speed.
- Heating capacities are based on 180°F entering hot water temperature and 68°F DB entering air temperature at sea level altitude and fan high speed.
- Maximum static pressure drop is 40 Pa
- Coil fin spacing is 12 FPI
- Noise level is based on medium speed at 30 Pa static pressure drop
- The product specification is subject to change without prior notice.

CEILING CONCEALED FAN COIL UNIT



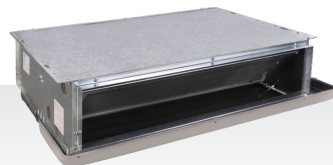
Single Coil Unit Technical Data (2-Pipe)

Model		SAF-CCP200 R1/L1	SAF-CCP300 R1/L1	SAF-CCP400 R1/L1	SAF-CCP600 R1/L1	SAF-CCP800 R1/L1
Nominal Air Flow Rate	CFM	200	300	400	600	800
	CMH	340	510	680	1020	1359
Total Heating Capacity	KW	6.0	8.9	11.1	15.2	19.4
	KBtu/hr	20.7	30.4	37.9	52.0	66.1
Total Cooling Capacity	KW	2.6	3.8	4.7	6.4	8.2
	KBtu/hr	8.9	12.8	15.9	21.7	27.9
Weight	kg	19.0	23.0	25.5	29.5	38.0
	lb	42	51	56	65	84
Nominal Power	W	25			30	55
	HP	0.03			0.04	0.07
Coil Test Pressure	kPa	2746				
	psig	398				
Coil Working Pressure	kPa	1765				
	psig	256				
Rated Current	Amp	0.22	0.19	0.22	0.33	0.48
Noise	dBA	41.8	33	37.9	37.8	40
Motor	QTY	1				2
Drain Pipe	3/4"					

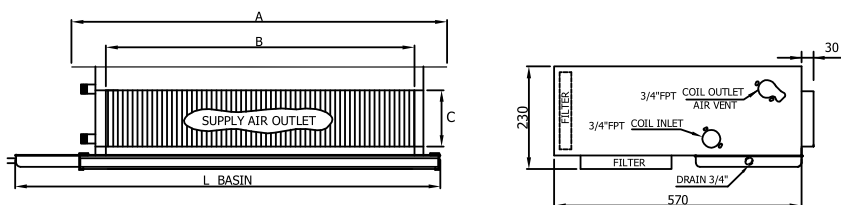
NOTE

- Cooling capacities are based on 44°F entering chilled water temperature and 80°F DB / 67°F WB air temperature at sea level altitude and fan high speed.
- Heating capacities are based on 180°F entering hot water temperature and 68°F DB entering air temperature at sea level altitude and fan high speed.
- Maximum static pressure drop is 40 Pa
- Coil fin spacing is 12 FPI
- Noise level is based on medium speed at 30 Pa static pressure drop
- The product specification is subject to change without prior notice.

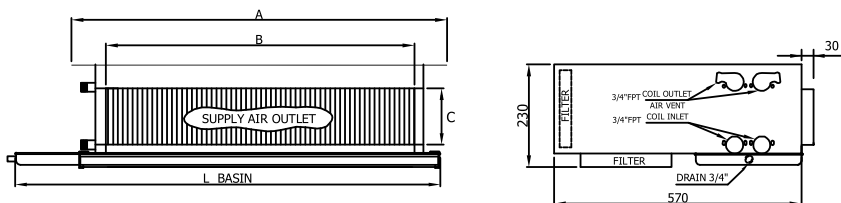
CEILING CONCEALED FAN COIL UNIT



A) HORIZONTAL CEILING CONCEALED FAN COIL UNIT(2-PIPE)



B) HORIZONTAL CEILING CONCEALED FAN COIL UNIT(4-PIPE)



Dimensions

Model	A	B	L	C
SAF-CCP200	650	540	810	155
SAF-CCP300	850	740	1060	155
SAF-CCP400	950	840	1060	155
SAF-CCP600	1090	980	1195	155
SAF-CCP800	1350	1240	1480	155

NOTE

- Left handed coil connections are shown.
- The product specifications is subject to change without prior notice.
- All dimensions are in mm.
- For further information please check our web site www.suzuki.sg